

Approved by the Planning Board on May 17, 2021

Approved by the Board of Zoning Adjustments on May 17, 2021

Approved by the Board of Planning and Zoning on May 17, 2021

THE BOARD OF PLANNING AND ZONING HAS REVIEWED THE APPLICATION FOR A ZERLOT LUMP DEVELOPMENT AND HAS CONCLUDED THAT THE PROPOSED DEVELOPMENT IS IN ACCORDANCE WITH THE ZONING ORDINANCE AND THE SUBDIVISION MAP ACT.

APPROVED: *LEE W. HARRIS, Sr. P.E.*

DATE: 5/17/2021

STATE OF NORTH CAROLINA - Cumberland County

County of Cumberland

Commissioner of Planning and Zoning

Lee W. Harris, Sr. P.E.

5/17/2021

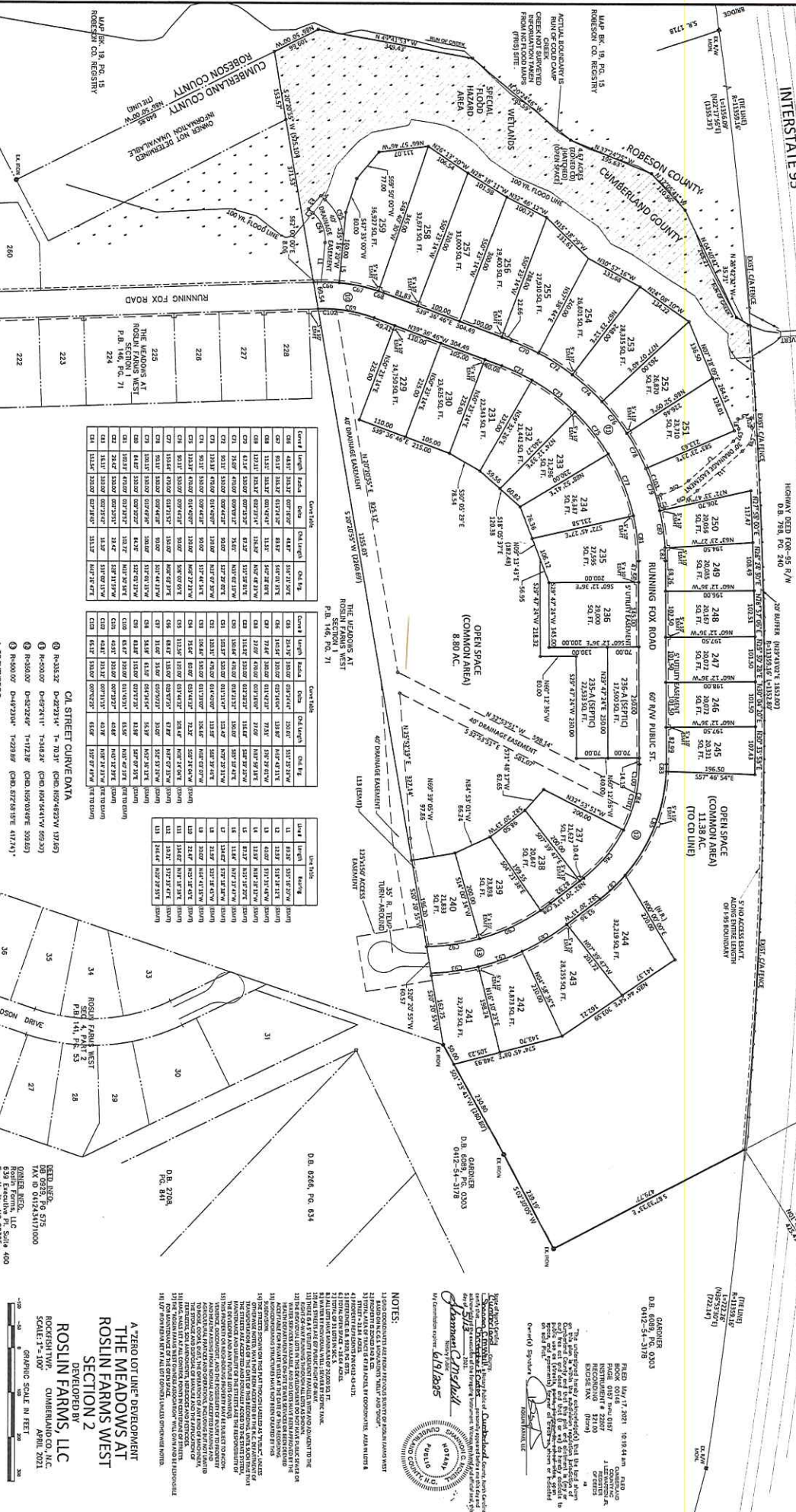
NOTES:

1. ALL DIMENSIONS ARE IN FEET AND DECIMALS THEREOF.

2. THE PROPOSED DEVELOPMENT IS SUBJECT TO THE APPROVAL OF THE BOARD OF PLANNING AND ZONING AND THE BOARD OF ZONING ADJUSTMENTS.

3. THE PROPOSED DEVELOPMENT IS SUBJECT TO THE APPROVAL OF THE BOARD OF PLANNING AND ZONING AND THE BOARD OF ZONING ADJUSTMENTS.

4. THE PROPOSED DEVELOPMENT IS SUBJECT TO THE APPROVAL OF THE BOARD OF PLANNING AND ZONING AND THE BOARD OF ZONING ADJUSTMENTS.



Lot #	Area (Ac)	Dimensions
222	0.21	110.00' x 100.00'
223	0.21	110.00' x 100.00'
224	0.21	110.00' x 100.00'
225	0.21	110.00' x 100.00'
226	0.21	110.00' x 100.00'
227	0.21	110.00' x 100.00'
228	0.21	110.00' x 100.00'
229	0.21	110.00' x 100.00'
230	0.21	110.00' x 100.00'
231	0.21	110.00' x 100.00'
232	0.21	110.00' x 100.00'
233	0.21	110.00' x 100.00'
234	0.21	110.00' x 100.00'
235	0.21	110.00' x 100.00'
236	0.21	110.00' x 100.00'
237	0.21	110.00' x 100.00'
238	0.21	110.00' x 100.00'
239	0.21	110.00' x 100.00'
240	0.21	110.00' x 100.00'
241	0.21	110.00' x 100.00'
242	0.21	110.00' x 100.00'
243	0.21	110.00' x 100.00'
244	0.21	110.00' x 100.00'
245	0.21	110.00' x 100.00'
246	0.21	110.00' x 100.00'
247	0.21	110.00' x 100.00'
248	0.21	110.00' x 100.00'
249	0.21	110.00' x 100.00'
250	0.21	110.00' x 100.00'
251	0.21	110.00' x 100.00'
252	0.21	110.00' x 100.00'
253	0.21	110.00' x 100.00'
254	0.21	110.00' x 100.00'

Lot #	Area (Ac)	Dimensions
255	0.21	110.00' x 100.00'
256	0.21	110.00' x 100.00'
257	0.21	110.00' x 100.00'
258	0.21	110.00' x 100.00'
259	0.21	110.00' x 100.00'
260	0.21	110.00' x 100.00'
261	0.21	110.00' x 100.00'
262	0.21	110.00' x 100.00'
263	0.21	110.00' x 100.00'
264	0.21	110.00' x 100.00'
265	0.21	110.00' x 100.00'
266	0.21	110.00' x 100.00'
267	0.21	110.00' x 100.00'
268	0.21	110.00' x 100.00'
269	0.21	110.00' x 100.00'
270	0.21	110.00' x 100.00'
271	0.21	110.00' x 100.00'
272	0.21	110.00' x 100.00'
273	0.21	110.00' x 100.00'
274	0.21	110.00' x 100.00'
275	0.21	110.00' x 100.00'
276	0.21	110.00' x 100.00'
277	0.21	110.00' x 100.00'
278	0.21	110.00' x 100.00'
279	0.21	110.00' x 100.00'
280	0.21	110.00' x 100.00'

Lot #	Area (Ac)	Dimensions
281	0.21	110.00' x 100.00'
282	0.21	110.00' x 100.00'
283	0.21	110.00' x 100.00'
284	0.21	110.00' x 100.00'
285	0.21	110.00' x 100.00'
286	0.21	110.00' x 100.00'
287	0.21	110.00' x 100.00'
288	0.21	110.00' x 100.00'
289	0.21	110.00' x 100.00'
290	0.21	110.00' x 100.00'
291	0.21	110.00' x 100.00'
292	0.21	110.00' x 100.00'
293	0.21	110.00' x 100.00'
294	0.21	110.00' x 100.00'
295	0.21	110.00' x 100.00'
296	0.21	110.00' x 100.00'
297	0.21	110.00' x 100.00'
298	0.21	110.00' x 100.00'
299	0.21	110.00' x 100.00'
300	0.21	110.00' x 100.00'

Lot #	Area (Ac)	Dimensions
301	0.21	110.00' x 100.00'
302	0.21	110.00' x 100.00'
303	0.21	110.00' x 100.00'
304	0.21	110.00' x 100.00'
305	0.21	110.00' x 100.00'
306	0.21	110.00' x 100.00'
307	0.21	110.00' x 100.00'
308	0.21	110.00' x 100.00'
309	0.21	110.00' x 100.00'
310	0.21	110.00' x 100.00'
311	0.21	110.00' x 100.00'
312	0.21	110.00' x 100.00'
313	0.21	110.00' x 100.00'
314	0.21	110.00' x 100.00'
315	0.21	110.00' x 100.00'
316	0.21	110.00' x 100.00'
317	0.21	110.00' x 100.00'
318	0.21	110.00' x 100.00'
319	0.21	110.00' x 100.00'
320	0.21	110.00' x 100.00'

DEED REC. 08-0228, PG 575
 TAX ID 01242411000
 ROSSLIN FARM, LLC
 533 EXECUTIVE FL SUITE 400
 FAYETTEVILLE, NC 28533

DEED REC. 08-0228, PG 575
 TAX ID 01242411000
 ROSSLIN FARM, LLC
 533 EXECUTIVE FL SUITE 400
 FAYETTEVILLE, NC 28533

DEED REC. 08-0228, PG 575
 TAX ID 01242411000
 ROSSLIN FARM, LLC
 533 EXECUTIVE FL SUITE 400
 FAYETTEVILLE, NC 28533

