



APPROVED BY THE CITY OF CUMBERLAND  
ON THE 11th DAY OF JULY 2017  
BY: *[Signature]*  
TITLE: *[Signature]*

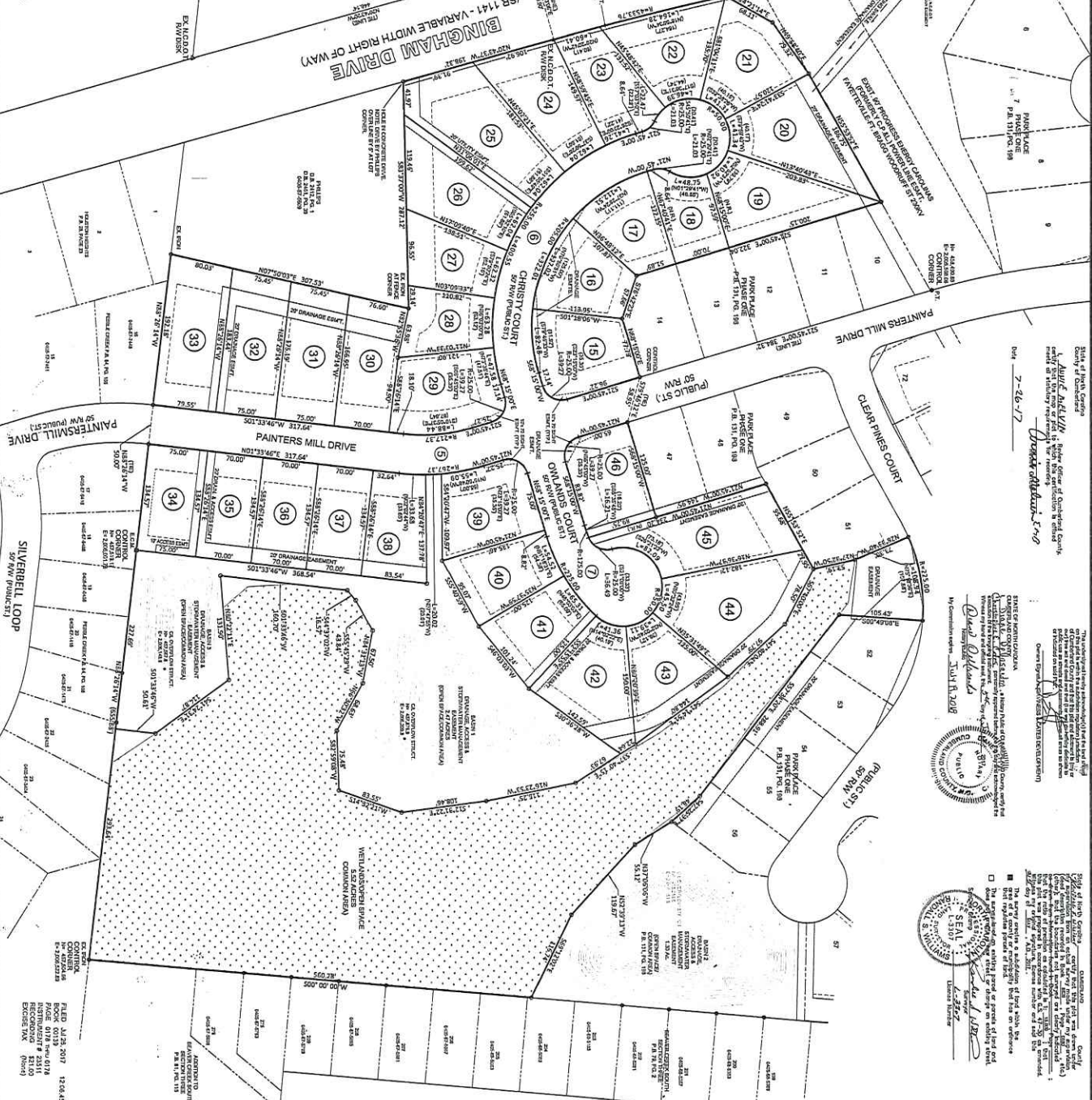
*[Signature]*  
Cecil B. Williams, Esq.  
By: *[Signature]*  
Cecil B. Williams, Esq.

Curve Table

| Radius | Delta  | Tangent   |
|--------|--------|-----------|
| 5      | 242.27 | 231.866'  |
| 6      | 230.00 | 90°00'00" |
| 7      | 200.00 | 30°30'55" |

**STORMWATER NOTES:**

- 1) THE VERT. CURVE DATA FROM THE VERTICAL ALIGNMENT DESIGN SHALL BE USED TO DETERMINE THE STORMWATER FLOW RATES.
- 2) THE STORMWATER FLOW RATES SHALL BE DETERMINED USING THE RAINFALL DATA FROM THE DESIGN STORM.
- 3) THE STORMWATER FLOW RATES SHALL BE DETERMINED USING THE RAINFALL DATA FROM THE DESIGN STORM.
- 4) THE STORMWATER FLOW RATES SHALL BE DETERMINED USING THE RAINFALL DATA FROM THE DESIGN STORM.
- 5) THE STORMWATER FLOW RATES SHALL BE DETERMINED USING THE RAINFALL DATA FROM THE DESIGN STORM.
- 6) THE STORMWATER FLOW RATES SHALL BE DETERMINED USING THE RAINFALL DATA FROM THE DESIGN STORM.
- 7) THE STORMWATER FLOW RATES SHALL BE DETERMINED USING THE RAINFALL DATA FROM THE DESIGN STORM.



State of North Carolina  
County of Cumberland  
**Cecil B. Williams**, Register of Deeds  
7-26-17  
*[Signature]*  
Cecil B. Williams, Esq.

REGISTERED PROFESSIONAL ENGINEER  
Cecil B. Williams, Esq.  
Professional Engineer License No. 12345  
Cumberland County, North Carolina  
1234 Main Street, Suite 567  
Cumberland, NC 28033  
Phone: (704) 123-4567  
Fax: (704) 987-6543  
www.cecilwilliams.com

SEAL  
Cecil B. Williams, Esq.  
Professional Engineer License No. 12345  
Cumberland County, North Carolina  
1234 Main Street, Suite 567  
Cumberland, NC 28033  
Phone: (704) 123-4567  
Fax: (704) 987-6543  
www.cecilwilliams.com

NOTES:  
1) ALL DISTANCES SHOWN ARE HORIZONTAL UNLESS NOTED.  
2) THE PROPERTY IS TO BE DIVIDED INTO 57 LOTS.  
3) PHASE TWO CONTAINS A TOTAL OF 31 LOTS.  
4) THE LOTS ARE TO BE DEVELOPED AS SINGLE-FAMILY RESIDENTIAL.  
5) THE LOTS ARE TO BE DEVELOPED AS SINGLE-FAMILY RESIDENTIAL.  
6) THE LOTS ARE TO BE DEVELOPED AS SINGLE-FAMILY RESIDENTIAL.  
7) THE LOTS ARE TO BE DEVELOPED AS SINGLE-FAMILY RESIDENTIAL.  
8) THE LOTS ARE TO BE DEVELOPED AS SINGLE-FAMILY RESIDENTIAL.  
9) THE LOTS ARE TO BE DEVELOPED AS SINGLE-FAMILY RESIDENTIAL.  
10) THE LOTS ARE TO BE DEVELOPED AS SINGLE-FAMILY RESIDENTIAL.

**CAVINESS & GATES BUILDING AND DEVELOPMENT COMPANY,**  
a North Carolina Corporation  
7151 TWP, CUMBERLAND CO., N.C.  
SCALE: 1" = 60'  
DATE: MAY 2017  
PROJECT: PARK PLACE PHASE TWO

