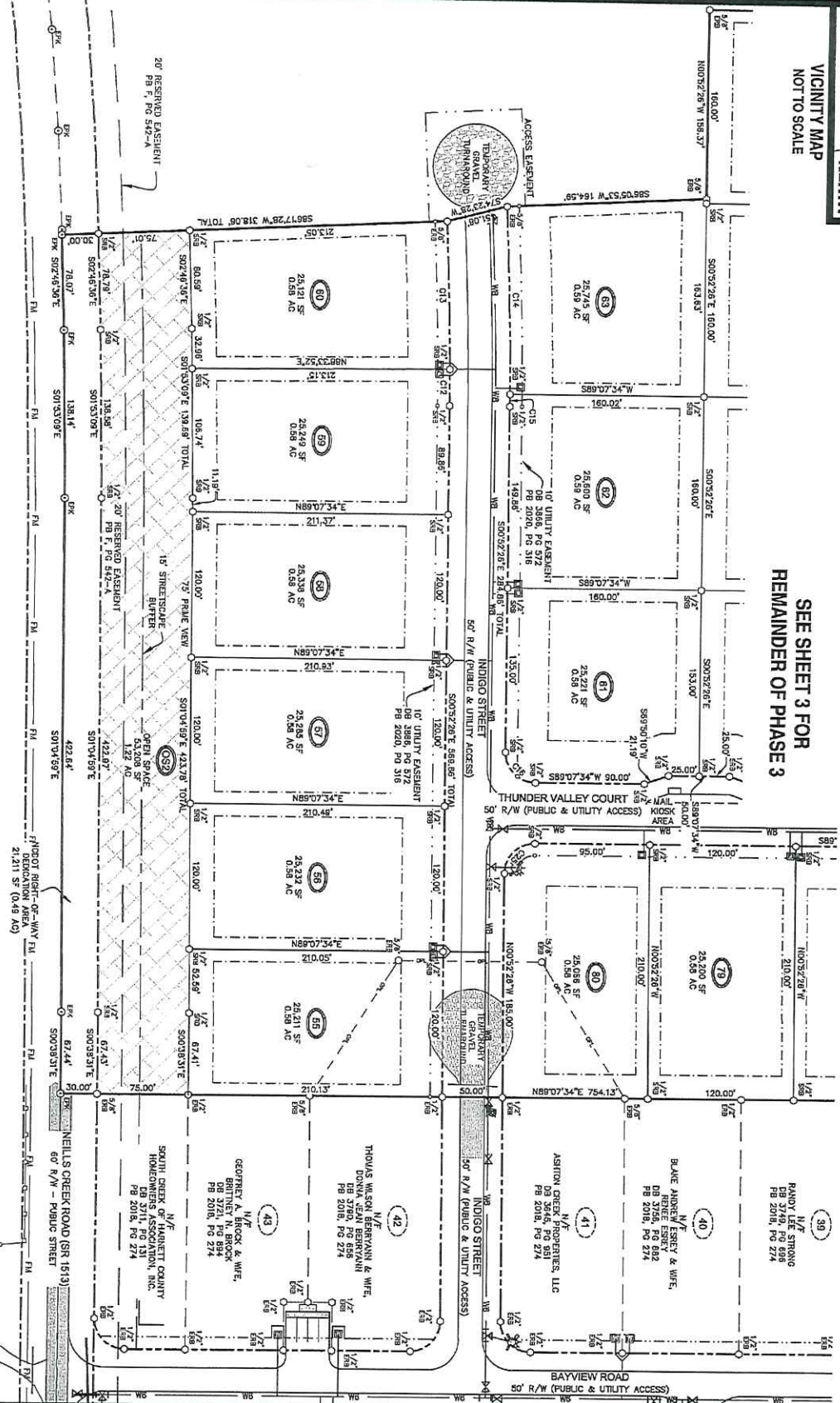


VICINITY MAP  
NOT TO SCALE

SEE SHEET 3 FOR  
REMAINDER OF PHASE 3

SEE SHEET 1  
FOR PHASE 2



SEE SHEET 4 FOR  
NOTES AND SIGNATURES



REVISIONS  
10-07-20

PROJECT NAME  
**SOUTH CREEK PHASES 2 & 3 SUBDIVISION**

TAX ID# 0661-70-0078,000  
0661-14-4203,000  
0661-14-1277,000  
0661-10-9710,000  
0661-70-4493,000

CLIENT  
**401 INVESTORS, LLC**

2204 Bayview Drive  
Fayetteville, North Carolina 28305  
Phone: (910) 465-5790  
Fax: (910) 878-9888

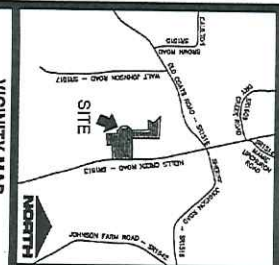
PROJECT INFORMATION

SUBMITTED BY:	NAME
DRAWN BY:	SEAN
CHECKED BY:	JULIAN
PROJECT NUMBER:	129

DRAWING SCALE  
HORIZONTAL: 1"=80'

DATE SURVEYED  
SEPTEMBER 18, 2020

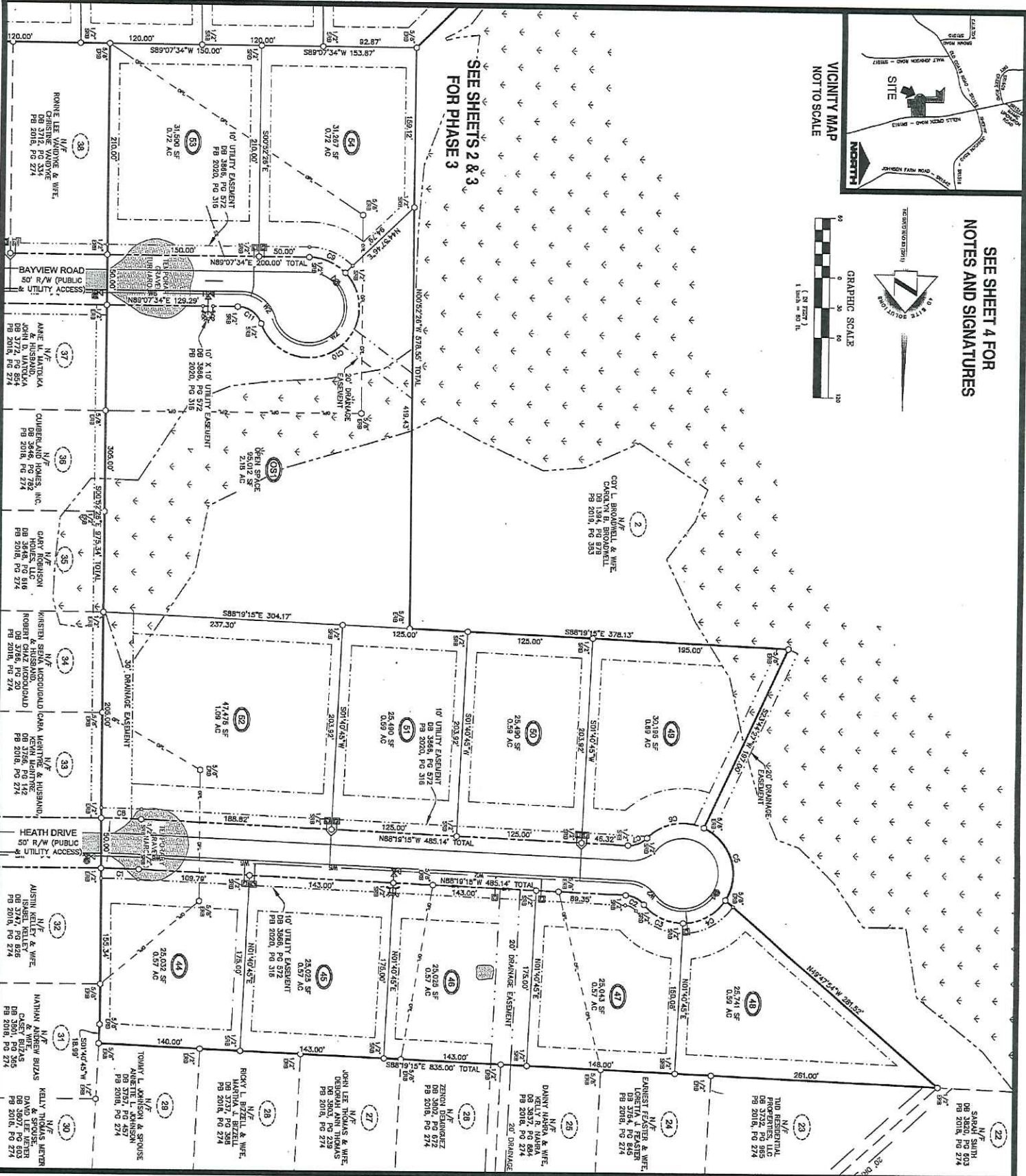
SHEET NUMBER  
**2**



VICINITY MAP  
NOT TO SCALE



SEE SHEET 4 FOR  
NOTES AND SIGNATURES



**CLIENT**  
401 INVESTORS, LLC

2294 Bayview Drive  
Fayetteville, North Carolina 28306  
Phone: (910) 485-5780  
Fax: (910) 678-9888

**PROJECT NAME**  
SOUTH CREEK  
PHASES 2 & 3  
SUBDIVISION

TAX ID# 0681-70-3078.000  
0681-41-6420.000  
0681-41-9277.000  
0681-40-9710.000  
0681-70-4483.000

**NEILLS CREEK ROAD**  
NEILLS CREEK TOWNSHIP  
NEAR LILLINGTON  
HARRETT COUNTY  
NORTH CAROLINA

**PROJECT INFORMATION**

SURVEYED BY:	NAME
DRAWN BY:	SEAN
CHECKED BY:	JIMMY
PROJECT NUMBER:	1279

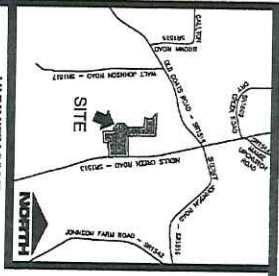
**DRAWING SCALE**  
HORIZONTAL: 1"=60'

**DATE SURVEYED**  
SEPTEMBER 18, 2020

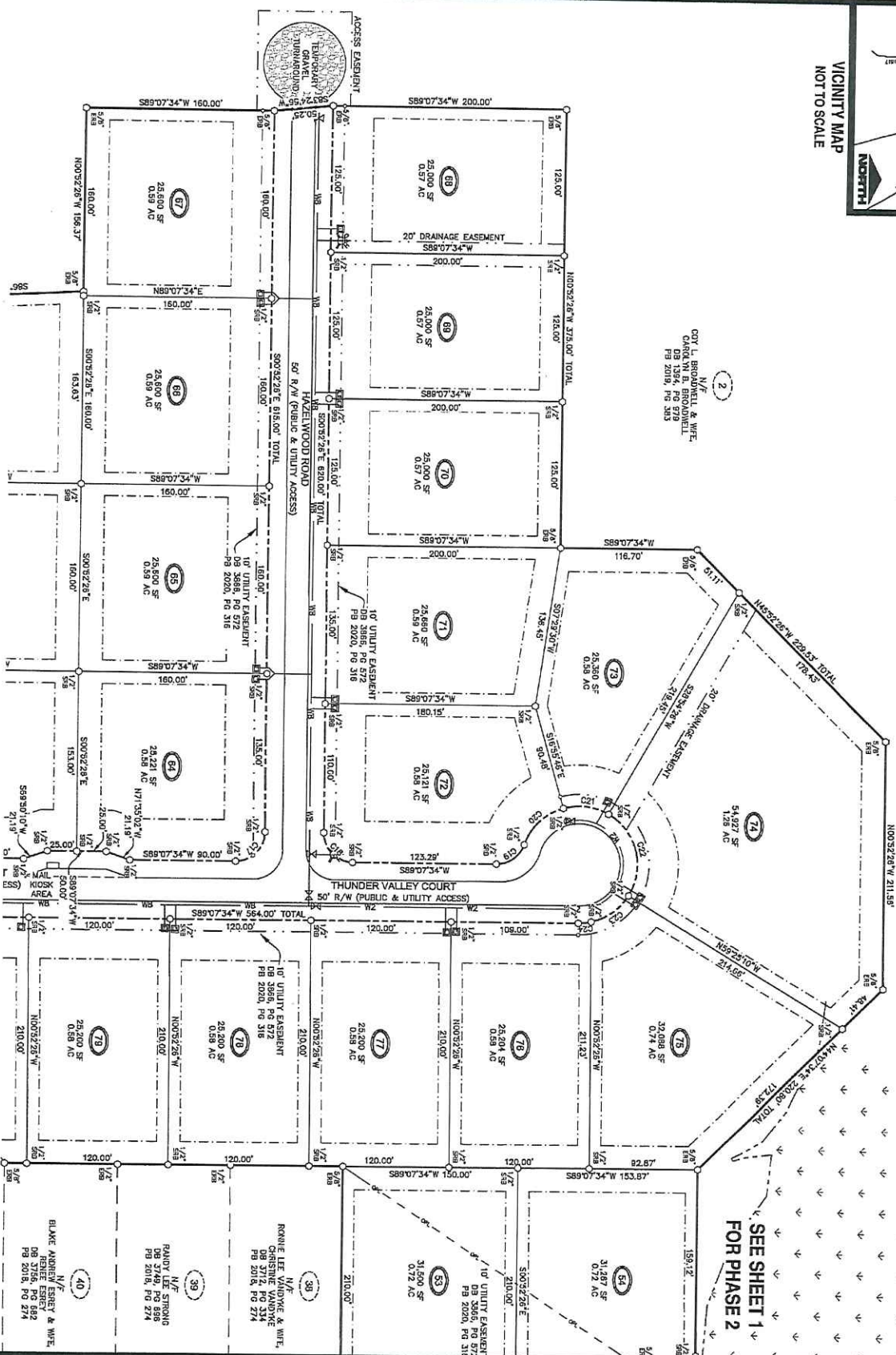
**SHEET NUMBER**  
1

**REVISIONS**  
10-07-20

**4Dsite solutions**  
401 Investors, LLC  
2294 Bayview Drive  
Fayetteville, NC 28306  
Phone: (910) 485-5780  
Fax: (910) 678-9888  
www.4dsite.com



VICINITY MAP  
NOT TO SCALE



SEE SHEET 2 FOR  
REMAINDER OF PHASE 3

SEE SHEET 4 FOR  
NOTES AND SIGNATURES

SEE SHEET 1  
FOR PHASE 2



**4Dsite solutions**  
Civil Engineering | Land Surveying  
1875 Lenoir Street, Suite 200  
Durham, NC 27605  
Phone: (919) 485-8777  
Fax: (919) 485-8778  
www.4d-site.com

PROJ. NO. 18-011  
DATE: 10/15/2020  
SCALE: AS SHOWN

**PROJECT NAME**  
SOUTH CREEK  
PHASES 2 & 3  
SUBDIVISION

**TAX ID#** 0661-70-3078.000  
0661-61-4420.000  
0661-61-9277.000  
0661-60-9710.000  
0661-70-4453.000

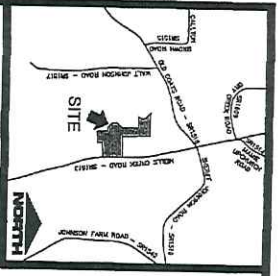
**CLIENT**  
401 INVESTORS, LLC

2004 Bayview Drive  
Fayetteville, North Carolina 28505  
Phone: (919) 465-0790  
Fax: (919) 678-9988

**DATE SURVEYED**  
SEPTEMBER 18, 2020

**SHEET NUMBER**  
**3**

OF 4



I, SEAN R. SEEVER, CERTIFY THAT THIS SURVEY IS OF ANOTHER CATEGORY, SUCH AS THE RECONSTRUCTION OF EXISTING PARCELS, A COURT-ORDERED SURVEY, OR OTHER SUBMISSION ON EXCEPTION TO THE DEFINITION OF PROFESSIONAL LAND SURVEYOR - L-4571.

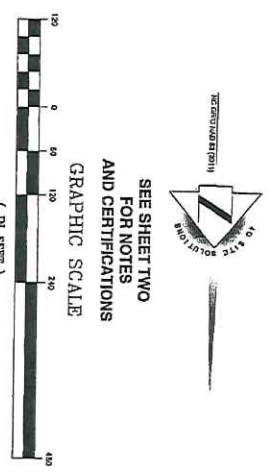
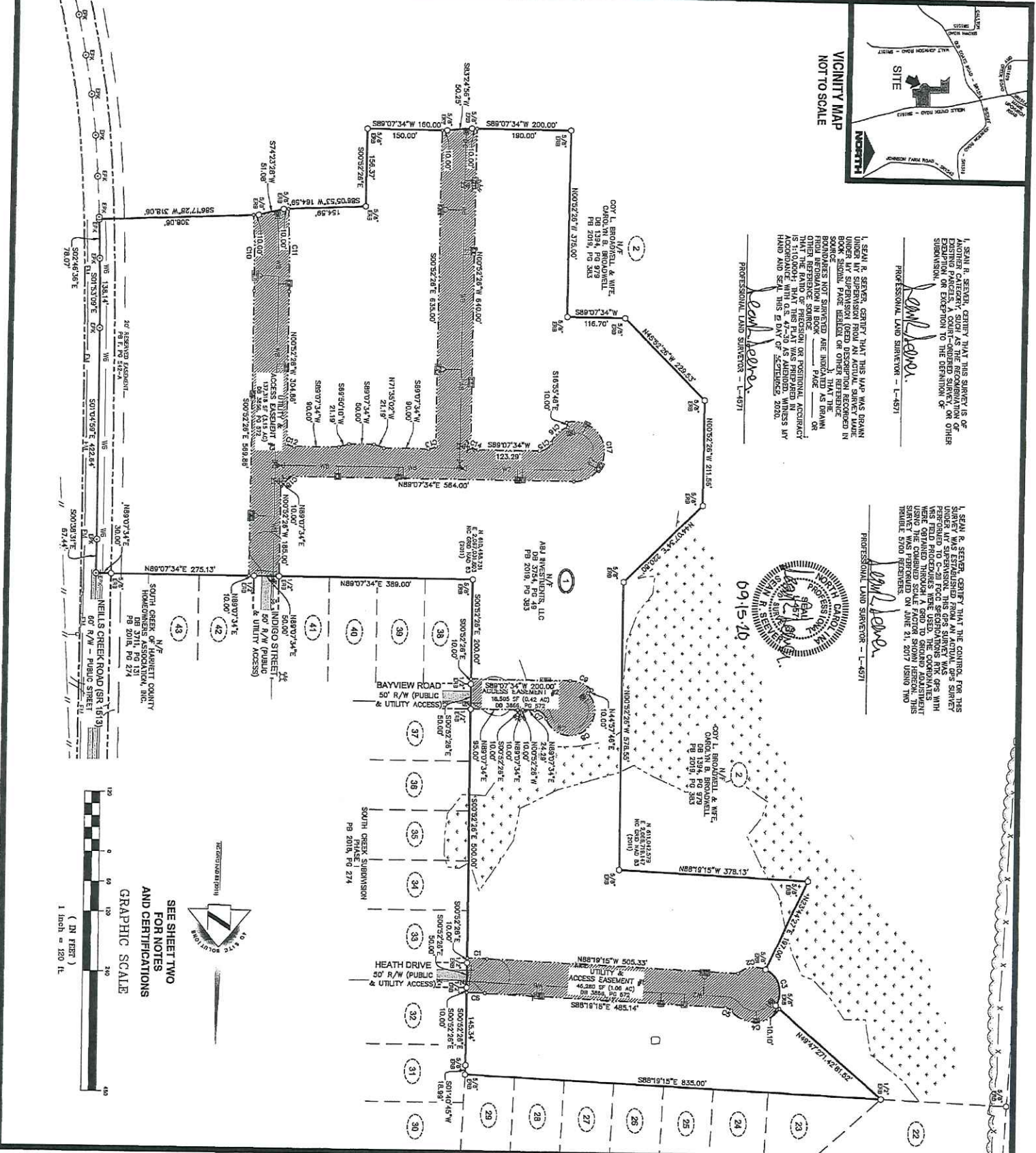
*Sean R. Seever*  
 PROFESSIONAL LAND SURVEYOR - L-4571

I, SEAN R. SEEVER, CERTIFY THAT THE CONTROL FOR THIS SURVEY WAS OBTAINED FROM AN ACTUAL SURVEY MADE UNDER MY SUPERVISION AND THAT THE CONTROL WAS PERFORMED TO C-2017 FDC SPECIFICATIONS FOR GPS WITH THE CONTROL POINTS WERE USED. THE COORDINATES WERE OBTAINED FROM THE NATIONAL POSITIVE CONTROL POINT LIST USING THE COMBINED SCALE FACTOR FROM HEREON THIS SURVEY WAS PERFORMED ON JUNE 21, 2017 USING TWO

*Sean R. Seever*  
 PROFESSIONAL LAND SURVEYOR - L-4571

I, SEAN R. SEEVER, CERTIFY THAT THIS MAP WAS DRAWN UNDER MY SUPERVISION AND THAT THE CONTROL WAS OBTAINED FROM AN ACTUAL SURVEY MADE UNDER MY SUPERVISION AND THAT THE CONTROL WAS PERFORMED TO C-2017 FDC SPECIFICATIONS FOR GPS WITH THE CONTROL POINTS WERE USED. THE COORDINATES WERE OBTAINED FROM THE NATIONAL POSITIVE CONTROL POINT LIST USING THE COMBINED SCALE FACTOR FROM HEREON THIS SURVEY WAS PERFORMED ON JUNE 21, 2017 USING TWO

*Sean R. Seever*  
 PROFESSIONAL LAND SURVEYOR - L-4571



SEE SHEET TWO FOR NOTES AND CERTIFICATIONS

GRAPHIC SCALE  
 (IN FEET)  
 1 inch = 120 ft.



REVISIONS  
 09-15-20

PROJECT NAME  
**SOUTH CREEK PHASES 2 & 3 UTILITY & ACCESS EASEMENT**

TAX ID# 0681-70-3078-000  
 0681-61-6420-000  
 0681-61-9277-000  
 0681-60-9710-000  
 0681-70-4453-000

CLIENT  
**401 INVESTORS, LLC**

NEILS CREEK ROAD  
 NEAR LILLINGTON  
 HARRIETT COUNTY  
 NORTH CAROLINA

PROJECT INFORMATION

SURVEYED BY:	NAME
DRAWN BY:	SEAN
CHECKED BY:	JIMMY
PROJECT NUMBER:	1278

DRAWING SCALE  
 HORIZONTAL: 1"=120'

DATE SURVEYED  
 AUGUST 29, 2018

SHEET NUMBER  
**1**

