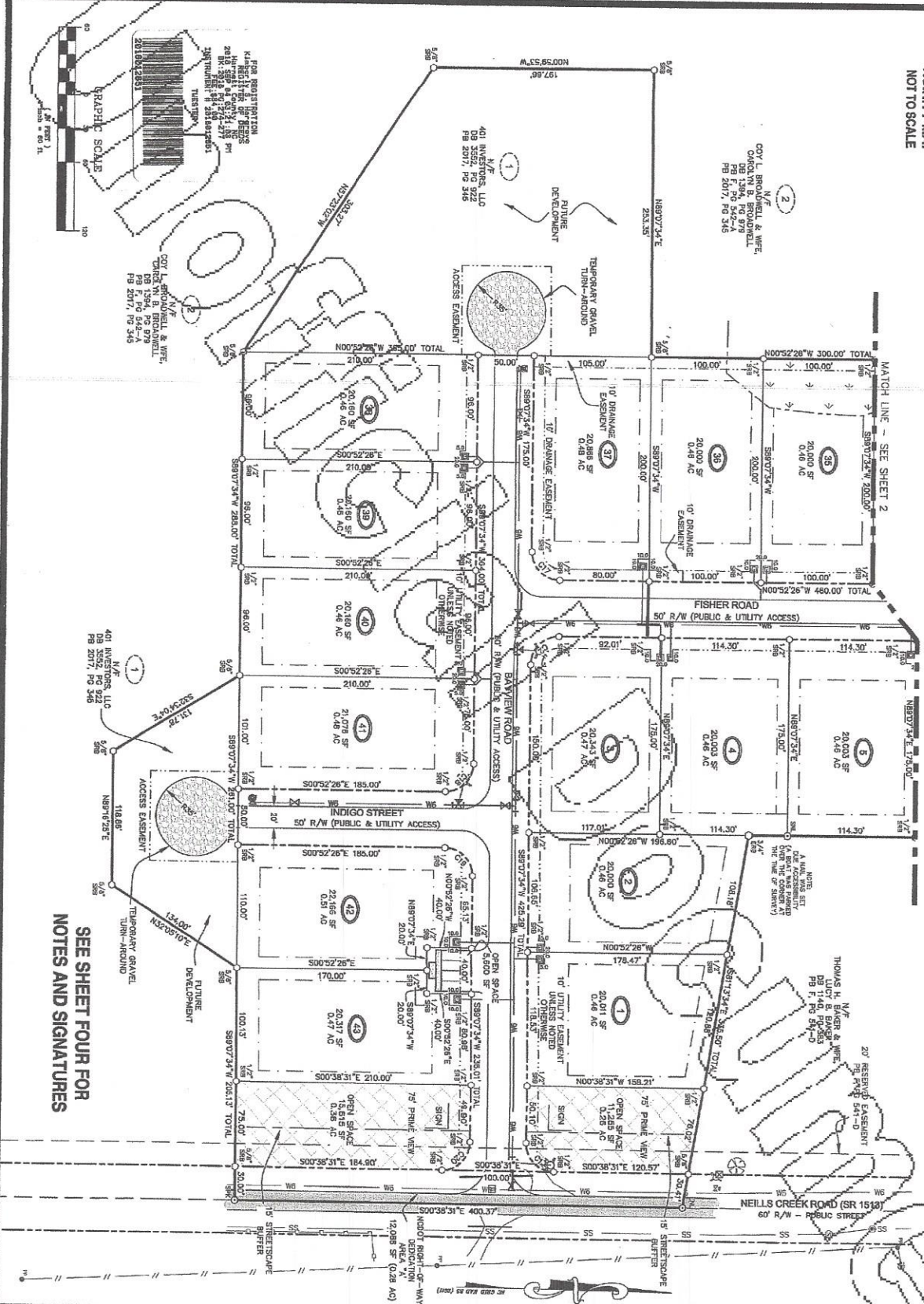


VICINITY MAP  
NOT TO SCALE



SEE SHEET FOUR FOR  
NOTES AND SIGNATURES

**4Dsite solutions**  
 4000 Highway 104, Suite 200  
 Raleigh, NC 27617  
 Phone: (919) 487-8888  
 Fax: (919) 487-8888  
 www.4dsite.com

06-20-18

REGIONS

PROJECT NAME  
**SOUTH CREEK  
 SUBDIVISION  
 MAP**

TAX ID# 0661-71-3109-000  
 NEILS CREEK ROAD  
 NEILS CREEK TOWNSHIP  
 NEAR ILLINGTON  
 HARRETT COUNTY  
 NORTH CAROLINA

CLIENT  
**401 INVESTORS,  
 LLC**

2204 Bayler Drive  
 Fayetteville, North Carolina 28305  
 Phone: (910) 465-5700  
 Fax: (910) 576-8888

PROJECT INFORMATION

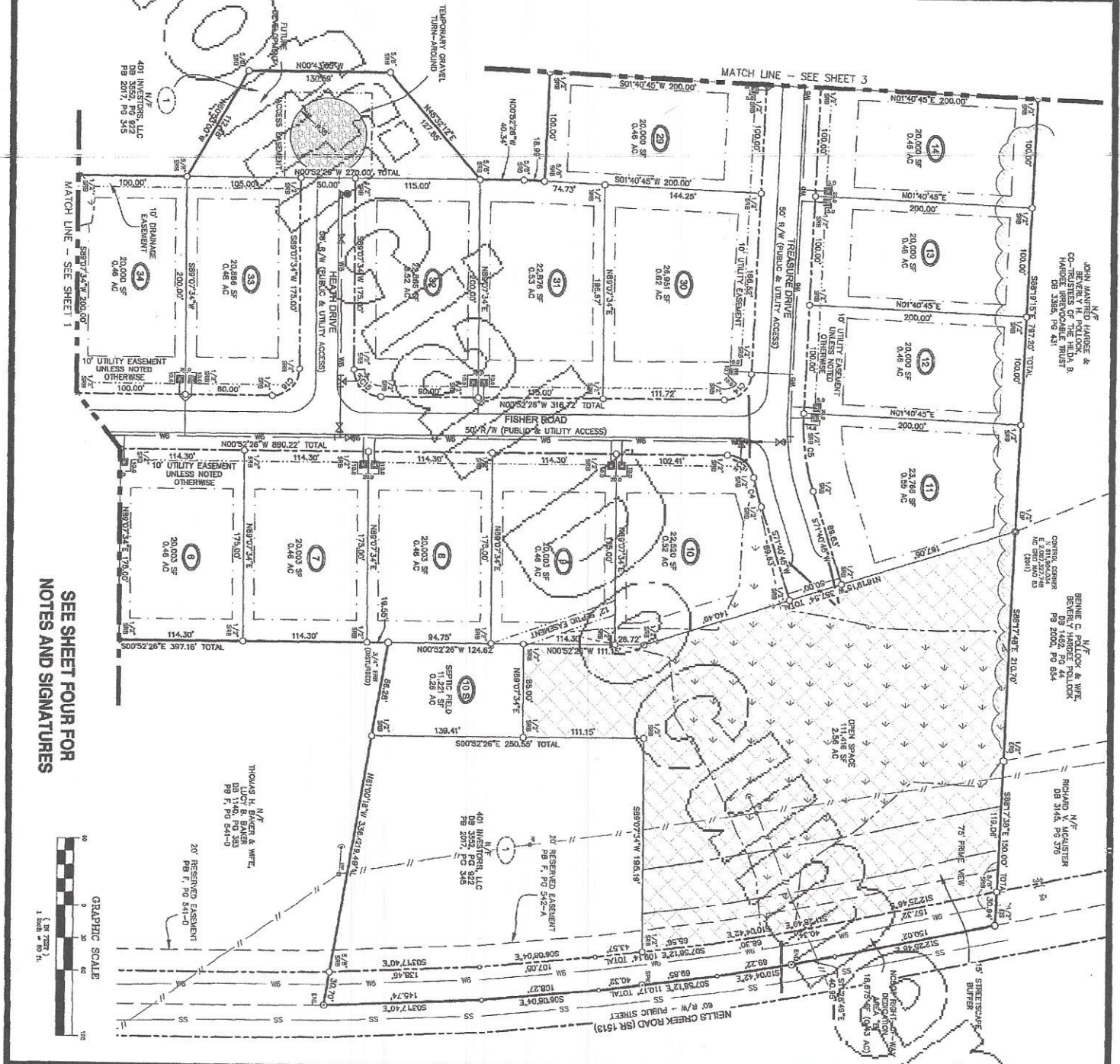
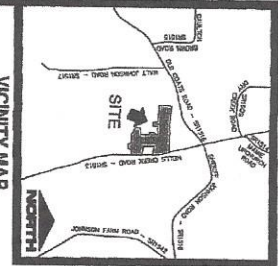
SURVEYED BY:	NAME
DRAWN BY:	SEAN
CHECKED BY:	JIMMY
PROJECT NUMBER:	1278

DRAWING SCALE  
 HORIZONTAL: 1"=60'

DATE SURVEYED  
 AUGUST 29, 2018

SHEET NUMBER  
**1**

DRAFT



SEE SHEET FOUR FOR  
NOTES AND SIGNATURES



20' RESERVED EASEMENT  
PB F, PG 541-D

THOMAS L. BAKER & WIFE  
DB 3140, PG 533  
PB F, PG 541-D

401 INVESTORS, LLC  
DB 3302, PG 522  
PB F, PG 543

RESERVED EASEMENT  
PB F, PG 542-A

SEWER FIELD  
0.28 AC

CRAY SPACE  
2.56 AC

JOHN MARRIED HANCOCK &  
BEVERLY H. POLLOCK,  
CO-OWNERS OF THE HILDA B  
HANCOCK DB 3389, PG 431

ORVILLE GERRARD  
E. 0001, PG 748  
N. 0001, PG 749

BENJIE C. POLLOCK & WIFE,  
BENJIE HARBER POLLOCK  
PG 2000, PG 654

RICHARD V. MCGUISTER  
DB 3145, PG 576

401 INVESTORS, LLC  
DB 3302, PG 522  
PB F, PG 543

RESERVED EASEMENT  
PB F, PG 542-A

SEWER FIELD  
0.28 AC

CRAY SPACE  
2.56 AC

JOHN MARRIED HANCOCK &  
BEVERLY H. POLLOCK,  
CO-OWNERS OF THE HILDA B  
HANCOCK DB 3389, PG 431

ORVILLE GERRARD  
E. 0001, PG 748  
N. 0001, PG 749

BENJIE C. POLLOCK & WIFE,  
BENJIE HARBER POLLOCK  
PG 2000, PG 654

RICHARD V. MCGUISTER  
DB 3145, PG 576

401 INVESTORS, LLC  
DB 3302, PG 522  
PB F, PG 543

RESERVED EASEMENT  
PB F, PG 542-A

SEWER FIELD  
0.28 AC

CRAY SPACE  
2.56 AC

CLIENT  
**401 INVESTORS, LLC**

2200 Bayview Drive  
Fayetteville, North Carolina 28306  
Phone: (910) 465-5790  
Fax: (910) 678-8988

PROJECT INFORMATION  
SURVEYED BY: JHNE  
DRAWN BY: SEAN  
CHECKED BY: JIMMY  
PROJECT NUMBER: 1273

DRAWING SCALE  
HORIZONTAL: 1"=60'

DATE SURVEYED  
AUGUST 29, 2018

SHEET NUMBER  
**2**

PROJECT NAME  
**SOUTH CREEK SUBDIVISION MAP**

TAX ID# 0951-71-3109.000  
NELLS CREEK ROAD  
NELLS CREEK TOWNSHIP  
NEAR LILLINGTON  
HARRNET COUNTY  
NORTH CAROLINA

4Dsite solutions  
Professional Engineering | Land Surveying  
4010 South Creek Road, Suite 112, Fayetteville, NC 28306  
Phone: (910) 465-5790 | Fax: (910) 678-8988  
www.4d-site.com

REVISIONS  
05-30-18



